

Aloha Lani Association
2211 Ala Wai Blvd.
Honolulu, Hawaii 96815
(808) 922-8160

Request to Install Air Conditioning Equipment

Date of Request Submittal: _____

Name of Apartment Owner(s): _____

Contact Phone Number(s): _____

Contractor Responsible for Installation: _____

Contractor Contact Phone Number(s): _____

Air Conditioner Make: _____ Expected Date of Installation: _____

☐ Attach a photo of the window or requested location prior to installation

☐ Attach drawing of installation design plan including measurements, materials and anchoring points

Request/Installation Process

1. Read and Agree to Abide by Attached Policies for Installation and Use (sign)
2. Submit Completed Form With Drawing and Photo
3. Receive Signed Approval for Installation From Resident Manager (or Board of Directors)
4. Complete Installation in Compliance With Submitted Design
5. Contact Resident Manager for Final Inspection
6. Receive Signature for Final Approval of Installation From Resident Manager

*Changes to air conditioner or install after final approval must be re-submitted to the Resident Manager's Office
Unapproved installations must be corrected, or returned to as-built conditions immediately upon notification.*

Aloha Lani Association
2211 Ala Wai Blvd.
Honolulu, Hawaii 96815
(808) 922-8160

**Air Conditioning Installation and Use
Policies for Aloha Lani**

1. Only ductless split unit systems and standard window unit air conditioners may be used. Ductless split unit systems may only be installed in penthouse apartments and apartments with attached lanai patios. Standard window unit air conditioners may be installed in bedroom windows only.
2. Standard window unit air conditioners installed in windows must be in line with the window's opening, i.e., it cannot exceed more than four inches beyond the plane of the window. Penthouse apartments may have more than one air conditioning unit, all other apartments are limited to one (1) air conditioner.
3. Standard window air conditioners may be installed on the Makai (ocean-facing) side and Ewa (west) end of the building. To keep with uniformity, no air conditioning units may be installed in windows on the Mauka (mountain, canal-facing) side of the building. Ductless split unit air conditioning systems installed on lanai patios must not be visible from the street below.
4. No air conditioning unit may be anchored to the concrete surface for a window. Standard window unit air conditioners should be attached to nothing more than the bedroom window frame. Standard window unit air conditioners installed using a chassis are preferable. Condensers for ductless split unit air conditioning systems should be installed in a manner that does not damage or affect the structure of the limited common, or common elements, of the property. Aloha Lani's employees and/or Association of Apartment Owners will not be responsible for injury or damages caused by the failure or fault of an air conditioning unit installation contracted by an individual homeowner.
5. All air conditioners must use an evaporator and be dripless. All window unit air conditioners must be of the dripless type. No air conditioning units will be permitted to leak water on any common, or limited common areas.
6. Standard window unit air conditioners may not exceed 12,000 BTU's. The air conditioning exterior cover, panels and frame work for the installation must be painted to match the adjacent color of the building and/or window framing.
7. Air conditioning units leaking water in common areas or deemed, "excessively noisy" must be repaired, replaced or removed immediately upon receipt of notice of violation. If three (3) violations concerning noise and/or leaking water are issued for the same air conditioning unit, said air conditioning unit will be classified as non-compliant and must be permanently removed within 14 days of notification.
8. All air conditioners must be maintained in accordance with applicable Aloha Lani House Rules, i.e. all exterior surfaces must be kept clean.

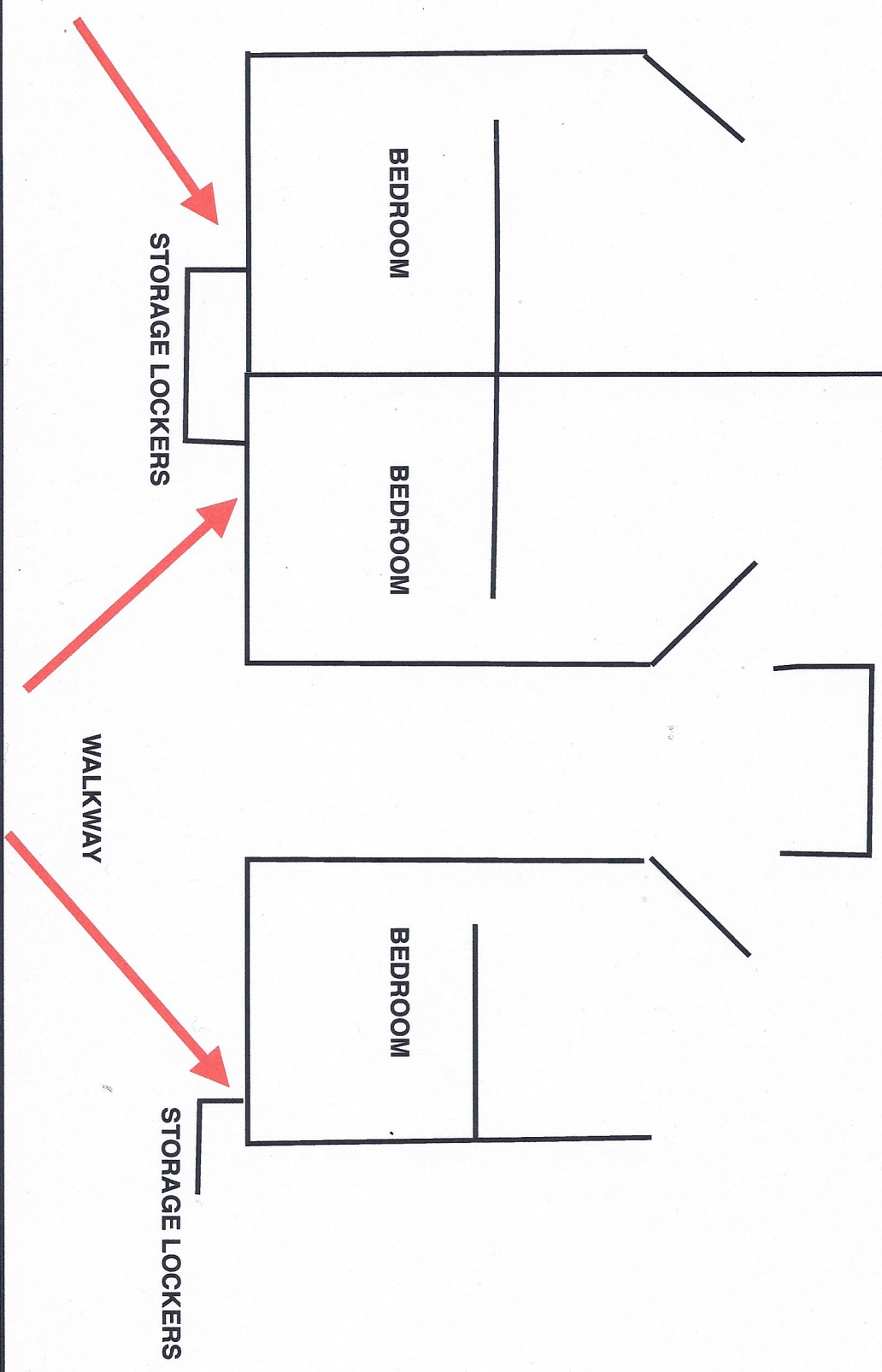
I, _____, have read and understand the listed policies above. I agree
Print Homeowner's Name

to comply with these adopted policies and all other applicable House Rules of the Association of Apartment
Owners for Aloha Lani.

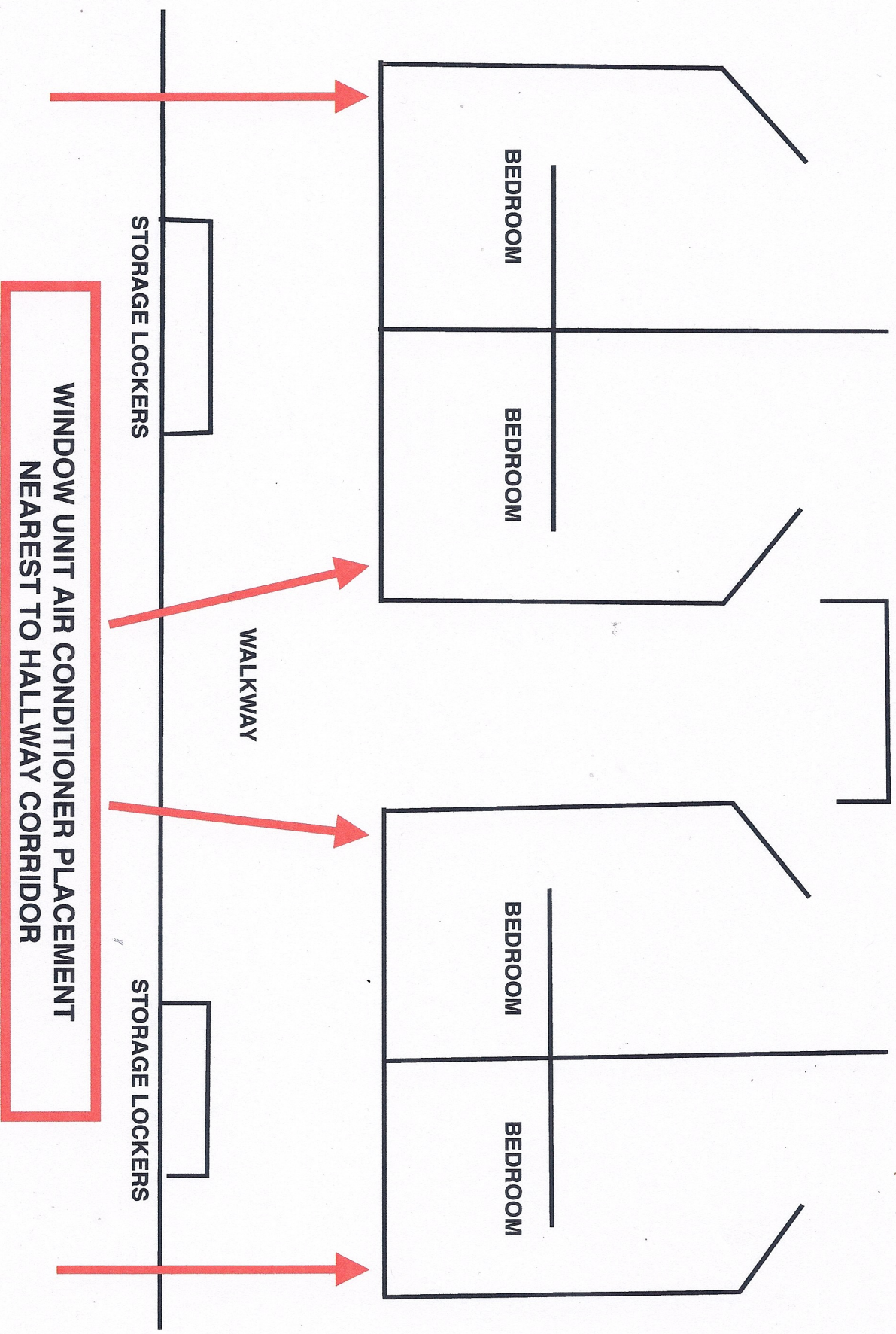
Homeowner's Signature

Date

TYPICAL APARTMENT LAYOUT FLOORS 7-10



**WINDOW UNIT AIR CONDITIONER PLACEMENT
NEAREST TO STORAGE LOCKER**



TYPICAL APARTMENT LAYOUT FLOORS 11-32